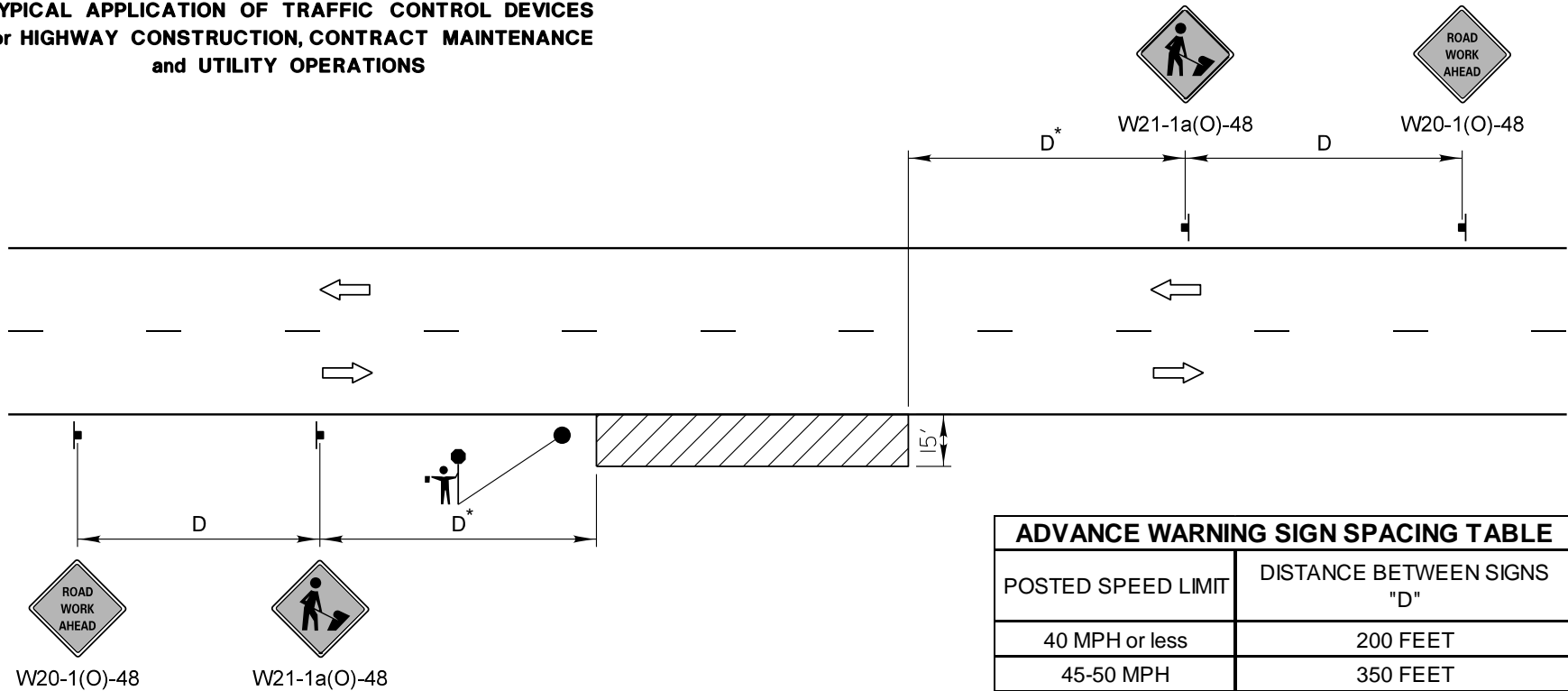


**TYPICAL APPLICATION OF TRAFFIC CONTROL DEVICES
for HIGHWAY CONSTRUCTION, CONTRACT MAINTENANCE
and UTILITY OPERATIONS**






GENERAL NOTES:

This special detail is used at any time, any vehicle, equipment, workers or their activities require a stationary, intermittent or continuous moving operation within 15 feet of the traffic lane, where the average speed is 1 mph or less.

* Minimum distance "D" is shown in the Advance Warning Sign Spacing Table. If the work is a moving operation, the maximum distance "D" may be extended to 1/2 the length required for one normal working day's operation or 4 miles, whichever is less.

If the work operation does not exceed 60 minutes, traffic control may be according to I.D.O.T. Highway Standard 701301.

SYMBOLS

-  WORK AREA
-  SIGN ON PORTABLE OR PERMANENT SUPPORT
-  FLAGGER WITH TRAFFIC CONTROL SIGN WHEN REQUIRED

MODIFIED IDOT STANDARD 701011-04

REVISIONS	DATE
Title Block Revision	8/1/09
Reformat LCDOT Standard	7/15/10
Updated IDOT Standard Version #	3/29/16



APPROVED BY: A. KHAWAJA
DATE: APRIL 1, 2007

**TWO LANE, TWO WAY,
OFF-ROAD OPERATIONS
DAY OPERATIONS ONLY**

LC7000

NOT TO SCALE