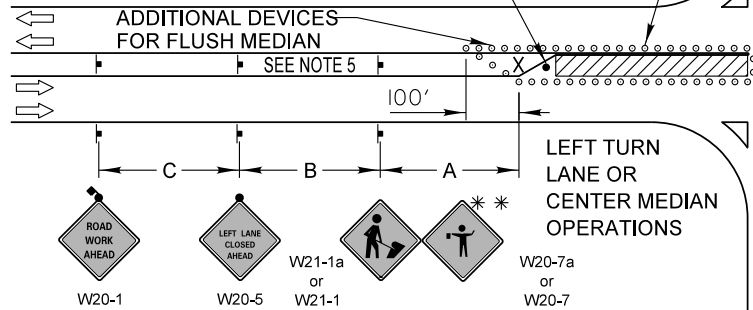
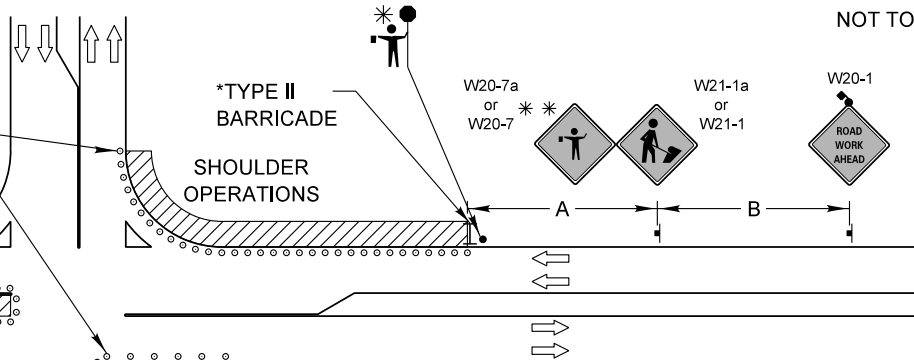


**TYPICAL APPLICATION OF TRAFFIC CONTROL DEVICES  
for HIGHWAY CONSTRUCTION, CONTRACT MAINTENANCE  
and UTILITY OPERATIONS**

CONES AT 25' CENTERS FOR 250'. ADDITIONAL CONES MAY BE PLACED AT 50' CENTERS. WHEN BARRICADES ARE USED, THE DISTANCE BETWEEN DEVICES MAY BE DOUBLED.



LEFT TURN LANE OR CENTER MEDIAN OPERATIONS



CORNER/CORNER ISLAND OPERATIONS

\*FLAGGERS ARE REQUIRED WHEN THE POSTED SPEED IS 45 MPH OR GREATER. USE OF THE "FLAGGER" SIGN IS LIMITED TO WHEN FLAGGERS ARE PRESENT.  
\*\*HIGH LEVEL WARNING DEVICES ARE REQUIRED WHEN THE SPEED LIMIT IS 40 MPH OR LESS.

**GENERAL NOTE:**

This Standard is used where at anytime, day or night, any vehicle, equipment, workers or their activities encroach on the pavement during shoulder operations or where construction requires lane closures in an urban area.

**DESIGN NOTES:**

- All warning signs shall have minimum dimensions of 48"x48". The Engineer may approve signs measuring 36"x36" when the posted speed limit is 30 mph or less.
- All signs not on the traveled way shall be post mounted if the closure time exceeds four calendar days. All signs shall be posted with the bottom of the sign not less than 7" above the edge of pavement. "NO PARKING" signs shall be installed throughout the work area at the discretion of the Engineer.
- The distance "L" shall be defined as:
 

SPEED	FORMULA
≤ 40 MPH	$L = (WS^2) / 60$
≥ 45 MPH	$L = LW \times S$

W = Width of Closure in FEET  
S = Normal Posted Speed Limit in MPH  
LW = Lane Width in FEET
- Type II barricades with Type C steady burning lights shall be used in lieu of cones for night operations. All cones and barricades shall be according to IDOT Standard 701901.
- For raised median operations, where the raised median is less than 10' signing shall not be installed on the median. No signing shall be installed on any painted median.
- If the work operation is performed between 9:00 am and 3:00 pm and the work does not exceed 15 minutes, the traffic protection shall be as shown for IDOT Standard 701301. Signs, when required, shall be at the spacing specified in the advance warning sign spacing table.
- If the work area is in the parking lane and the parking exists during work hours, a "ROAD WORK AHEAD" sign shall be installed in advance of work area at the spacing specified in the Advance Warning Sign Spacing Table and the area protected with cones or barricades.
- Type A flashing lights shall be used on each approach in advance of the work area during hours of darkness and installed above the first two sign in each series and the high level warning devices.
- Longitudinal dimensions may be adjusted to fit field conditions.
- Form BT 725 is required.

ADVANCE WARNING SIGN SPACING TABLE			
POSTED SPEED LIMIT	DISTANCE BETWEEN SIGNS		
	"A"	"B"	"C"
40 MPH or less	400 FEET	200 FEET	200 FEET
45-50 MPH	400 FEET	350 FEET	350 FEET
55 MPH	500 FEET	500 FEET	500 FEET

**SYMBOLS**

	WORK AREA
	CONE, BARRICADE, OR DRUM
	SIGN ON PORTABLE OR PERMANENT SUPPORT
	ARROW BOARD
	TYPE II BARRICADE W/TYPE A FLASHING LIGHT
	HIGH LEVEL WARNING DEVICE **
	FLAGGER WITH TRAFFIC CONTROL SIGN

**MODIFIED IDOT  
STANDARD 701701-10**

REVISIONS	DATE
Revised IDOT Reference	2/1/08
Title Block Revision	8/1/09
Reformat LCDOT Standard	7/15/10
Removed "Worker" & "Flagger" signs	6/26/12
Updated IDOT Standard Version #	3/29/16



APPROVED BY: ANTHONY KHAWAJA  
DATE: APRIL 1, 2007

**URBAN LANE CLOSURE  
MULTILANE INTERSECTION**

LC7003

NOT TO SCALE