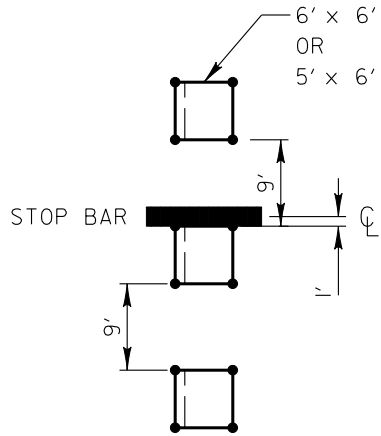
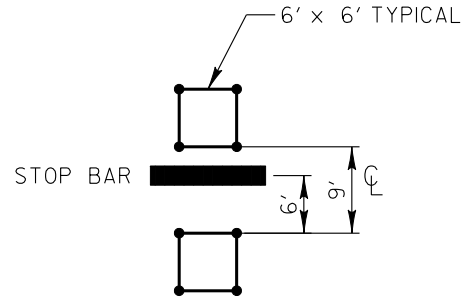


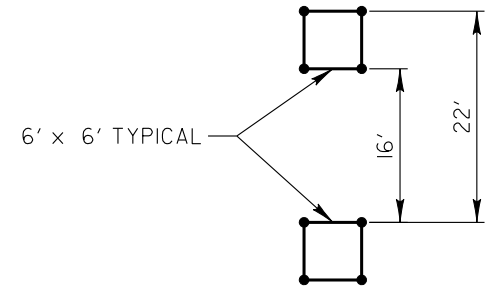
LEFT TURN LANE



THRU LANE

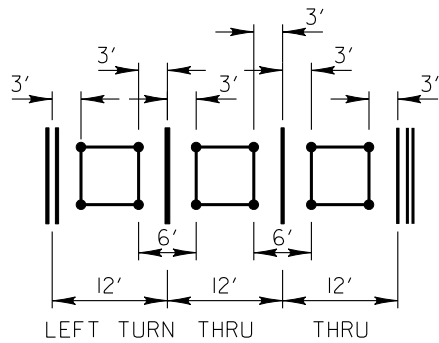


SPEED DETECTION

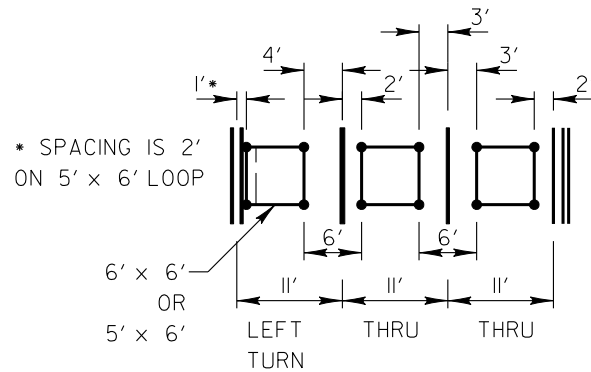


TYPICAL SPACING FOR DETECTOR LOOPS

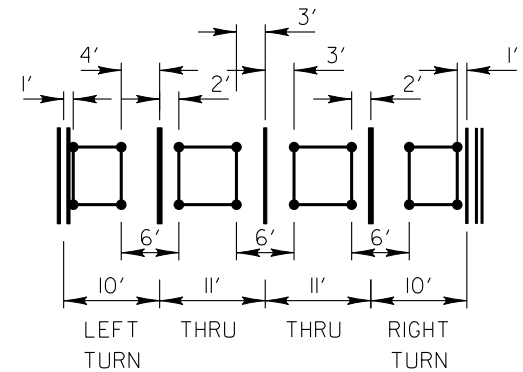
12' LANES



11' LANES



11' THRU LANES, 10' TURN LANE(S)



TYPICAL LATERAL PLACEMENT FOR DETECTOR LOOPS

REVISIONS	DATE



APPROVED BY: A. KHAWAJA
DATE: APRIL 1, 2007

TYPICAL DETECTOR LOOP LAYOUTS

LC8600