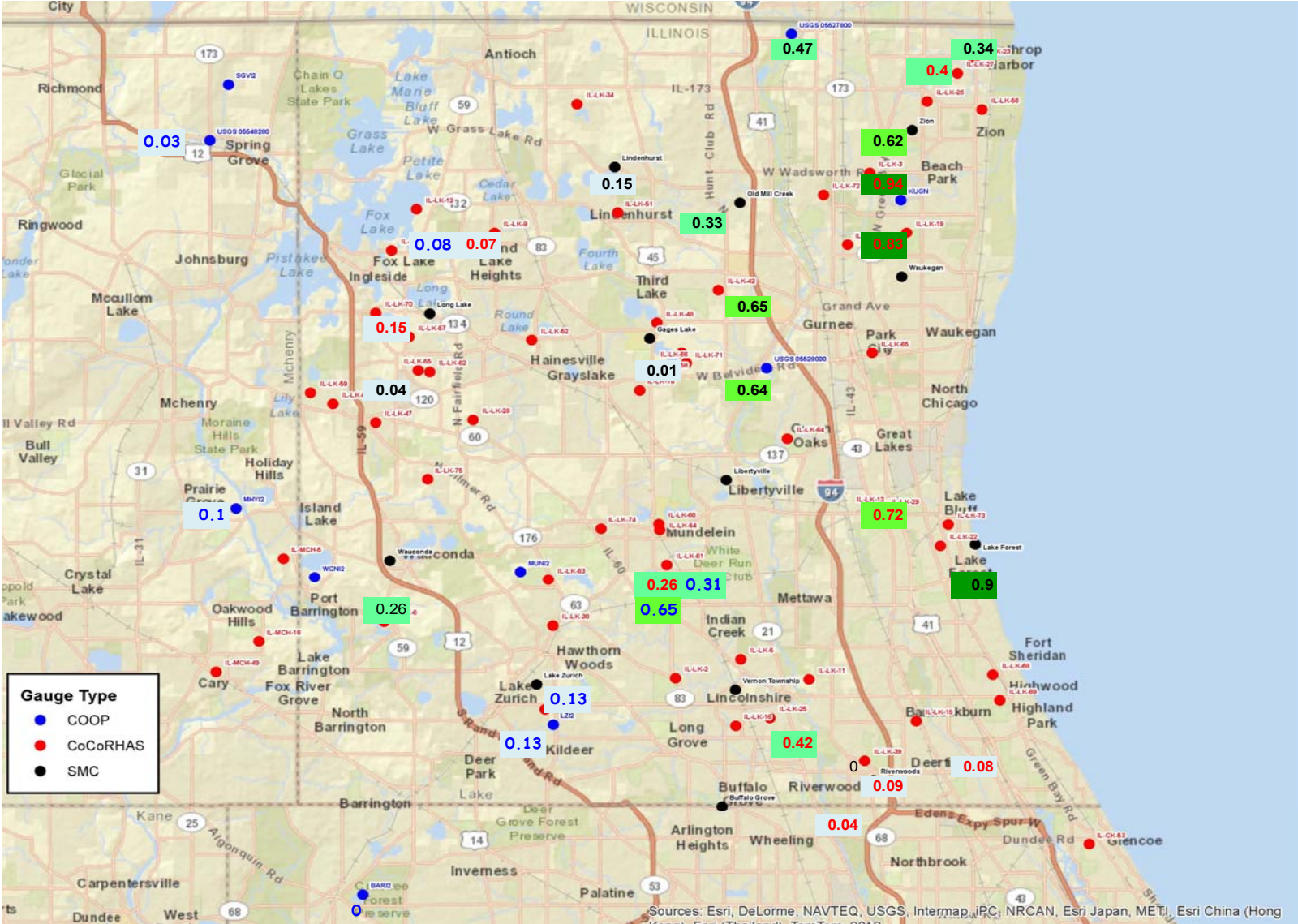


TOTAL STORM PRECIPITATION EQUIVALENT SUMMARY

Starting **Thursday** 6/27/2019 at 0700
Ending **Friday** 6/28/2019 at 0700
a 24 hour interval

Lake County only

Maximum 0.94
minimum 0.00
Average 0.36
STD 0.29



Sources: Esri, DeLorme, NAVTEQ, USGS, Intermap, iPC, NRCAN, Esri Japan, METI, Esri China (Hong Kong), Swisstopo, GEBCO, CNRS, Swisstopo, Esri (Brazil), Esri (India), Esri (Indonesia), Esri (Japan), Esri (Korea), Esri (Russia), Esri (UK), Esri (USA), Esri (Vietnam), Esri (Africa), Esri (Australia), Esri (Canada), Esri (France), Esri (Germany), Esri (Italy), Esri (Mexico), Esri (Spain), Esri (Taiwan), Esri (Thailand), Esri (Turkey), Esri (Ukraine), Esri (South Africa), Esri (India), Esri (China), Esri (Hong Kong)